



## 2021 GP14 National Championship

**Dates:** 2021/12/30 to 2022/01/02

**Venue:** George Lakes Yacht Club

**Organising Authority:** George Lakes Yacht Club in conjunction with the GP14 Class Association under the auspices of SA Sailing.

# SAILING INSTRUCTIONS

## 1 COMMUNICATIONS WITH COMPETITORS

- 1.1 Notices to competitors will be posted on the Official Notice Board located at the GLYC clubhouse door and on the official regatta WhatsApp group.
- 1.2 The race office is located at George Lakes Yacht Club.
- 1.3 All Competitors are to register on the official WhatsApp group.

## 2 CHANGES TO SAILING INSTRUCTIONS

Any change to the sailing instructions will be posted no later than 90 minutes before the first start on the day it will take effect, except that any change to the schedule of races will be posted by 19:00 on the day before it will take effect.

## 3 SIGNALS MADE ASHORE

- 3.1 Signals made ashore will be displayed on the flagpole at the Bosun's Locker
- 3.2 When flag AP is displayed ashore, "1 minute" is replaced with "not less than 30 minutes" in Race Signals AP.

## 5 CLASS FLAGS

Class flag will be as follows:

- 1 GP14 White flag with GP14 logo

## 6 COURSES

- 6.1 The diagrams in SI Addendum B show the courses, including the approximate angles between legs, the order in which marks are to be passed, and the side on which each mark is to be left.
- 6.2 The course number to be sailed will be shown on a board on the signal vessel.

## 7 MARKS

A description of all marks will be posted on the Notice Board and on the Regatta WhatsApp group before the close of registration.

## **8 THE START**

- 8.1 The starting line will be between a staff displaying an orange flag on the signal vessel at the starboard end and the course side of the port-end starting mark.
- 8.2 To alert boats that a race or sequence of races will begin soon, the orange starting line flag will be displayed with one sound two minutes before a warning signal is made.
- 8.3 [DP] Boats whose warning signal has not been made shall avoid the starting area during the starting sequence for other races.
- 8.4 A boat that does not start within 4 minutes after her starting signal will be scored Did Not Start without a hearing. This changes RRS A5.1 and A5.2.

## **9 CHANGE OF THE NEXT LEG OF THE COURSE**

To change the next leg of the course, the race committee will move the original mark or the finishing line to a new position.

## **10 THE FINISH**

The finishing line will be between a staff displaying a blue flag on the race committee vessel at the starboard end and the course side of the port-end finishing mark.

## **11 SHORTENING COURSE**

In addition to the provisions of RRS 32, the race committee may also signal a shortened course by displaying flag F with repeated sounds. On this signal, boats shall round mark 3 as required to sail the course, and thereafter proceed directly to the finishing line. This signal shall be made before the first boat reaches mark 3 and shall continue to be made until all boats still racing have passed this mark. This changes RRS 32.

## **13. TIME LIMITS**

Boats failing to finish within 15 minutes after the first boat [in her class] sails the course and finishes, and not subsequently retiring, being penalised or given redress, will be scored Time Limit Expired (TLE) without a hearing. A boat scored TLE shall be scored points for the finishing place one more than the points scored by the last boat that finished within this time limit. This changes RRS 35, A5.1, A5.2 and A10.

## **14 HEARING REQUESTS**

- a. The protest time limit is 45 minutes after the last boat in that class finishes the last race of the day or the race committee signals no more racing today, whichever is the later. The time will be posted on the official notice board.
- b. However, if racing is postponed under Race Signal AP over H, then the protest time limit for races completed so far that day is 60 minutes after the last boat finishes the last race completed, or the race committee signalled AP over H, whichever was the later.
- c. Hearing request forms are available from the race office
- d. Notices will be posted no later than 30 minutes after the protest time limit to inform competitors of hearings in which they are parties or named as witnesses. Hearings will be held on the veranda outside the clubhouse

## **15 SCORING**

- a. 4 races are required to be completed to constitute a series.
- b. (a) When fewer than 5 races have been completed, a boat's series score will be the total of her race scores.  
(b) When from 5 to 9 races have been completed, a boat's series score will be the total her race scores excluding her worst score.  
(c) When 10 or more races have been completed, a boat's series score will be the total of her race scores excluding her two worst scores.

## **16 SAFETY REGULATIONS**

- a. [DP] Youth category competitors shall wear a personal flotation device capable of supporting a 5 kg steel weight at all times while afloat, except briefly while changing or adjusting clothing or personal equipment.
- b. [DP] A boat that retires from a race shall notify the race committee at the first reasonable opportunity.

## **17 REPLACEMENT OF CREW OR EQUIPMENT**

- a. [DP] Substitution of competitors is not allowed without prior written approval of the race committee.
- b. [DP] Substitution of damaged or lost equipment will not be allowed unless approved by the race committee. Requests for substitution shall be made to the committee at the first reasonable opportunity, which may be after the race.

## **18 EQUIPMENT AND MEASUREMENT CHECKS**

A boat or equipment may be inspected at any time for compliance with the class rules, notice of race or sailing instructions.

## **19 SUPPORT PERSON VESSEL**

[DP] Support person vessels shall stay outside of the course (as shown on the course diagram) and at least 50m from boats racing.

## **20 TRASH DISPOSAL**

Trash may be placed aboard official [or support person] vessels.

---

**SI ADDENDUM A- MARKS**

1. Course marks will be pink buoys or the orange fixed marks.
2. The starting and finishing marks will be the signal vessel and a nearby pink buoy.

---

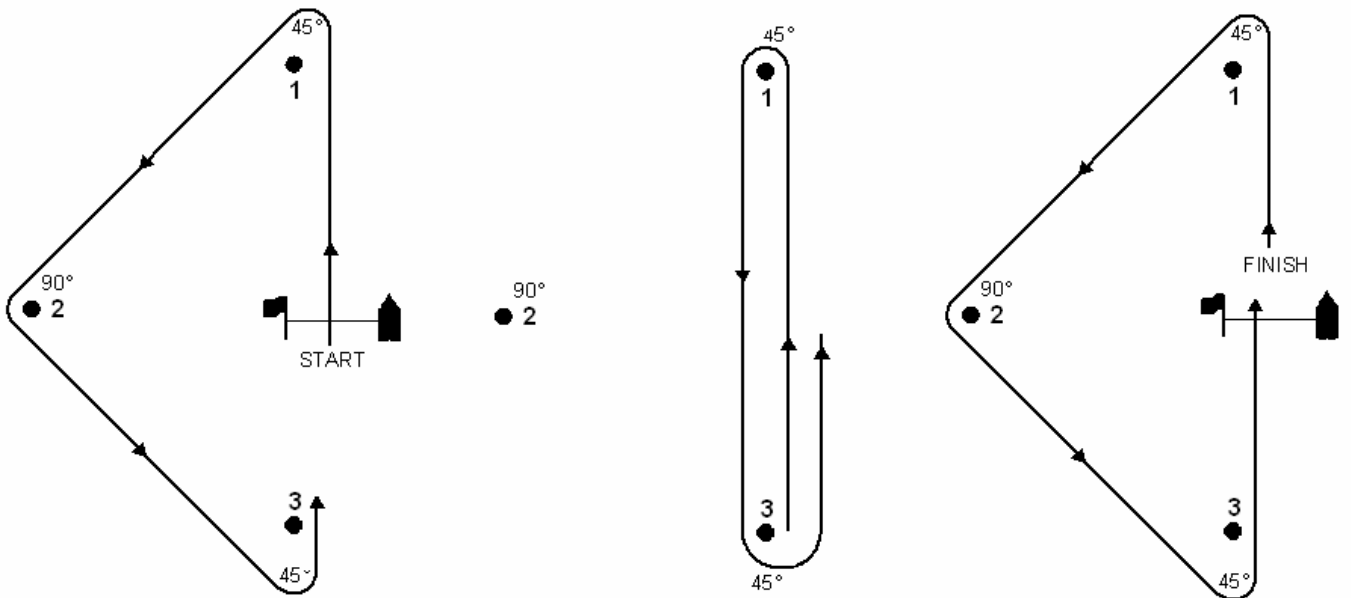
**SI ADDENDUM B- MARKS**

**Course Options.**

**COURSE 1-NUMBER 1**

**A Triangle-Windward-Leeward- Course**

**Start - 1 - 2 - 3 - 1 - 3 - 1 - 2 - 3 - Finish**



**Course 2 : Number 2**  
**Windward / leeward with offset and leeward gate**

Start - 1 - 2 - 3a/3b - 1 - 2 - 3a/3b - 1 - 2 - 3a/3b - Finish

